

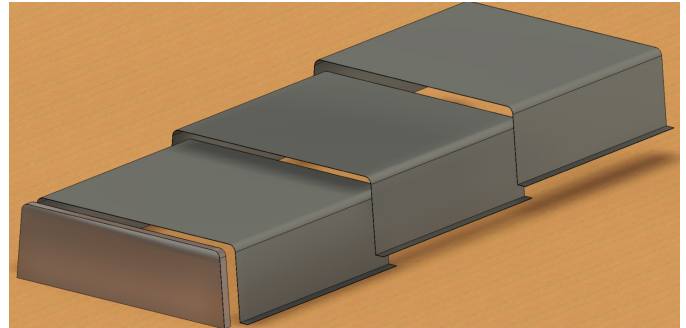


Pan Tips: Exposure Expectations

What does pan construction look like when completed?

Pan construction has been described as having “a finish unto its own”, which is another way of saying it’s just different. Most projects are formed with Flangeforms or Long-Flangeforms that produce lap and flange marks.

Laps occur when successive pans are placed one on top of the other, and flange marks refer to the returns at the bottom of the pans. During concrete placement, the weight of workers, reinforcing steel and concrete creates offsets in the soffits, sides or tops of the pans. These offsets are non-structural in nature, but often objectionable if exposed to public view.



In 2013, the American Concrete Institute (ACI) introduced a way of classifying concrete for exposed conditions, but most designers still use the old classification when referring to pans; A, B, C, or D because it focuses on offsets. As Cast offsets of D (1”) should be expected for projects formed using Flangeform pans with C (1/2”) classifications possible with Longforms or Long-Flangeform projects. Offsets of B (1/4”) or A (1/8”) are not possible with pan construction.



When considering pan construction, think efficiency first and finish second. Coordinate expected finish expectations with your local Steel Form Rental representative.

